



**Conveyor Toaster
CT1 Operating Manual**

Introduction

Thank you for purchasing a Pantheon Catering Equipment product. In this booklet you will find instructions for safe operation so please read carefully and retain for future reference.

Warnings and Precautions

The following warnings and precautions are important and must be observed:

- Ensure voltage and frequency power requirements for the conveyor toaster match that of the supply.
- The machine must be earthed when used. There is a danger of electric shock if it is not earthed.
- In case of emergency, please turn off the power switch and unplug the machine.
- If the electric wire becomes damaged, a qualified engineer or the manufacturer must replace it.

Pantheon Catering Equipment is not responsible for any accidents or faults caused by amendments made to the machine or improper use by the user.

Technical Data

Specifications:

Model:	CT1
Voltage (V)	220-240V 50Hz
Weight (Kg)	20
Dimensions (mm)	370w x 420d x 430h

Installation

Positioning:

To ensure there is sufficient space for ventilation, please adhere to the following clearances:

- **Above:** 100mm
- **Rear:** 300mm
- **Left:** 100mm
- **Right:** 100mm

Ensure there is enough space at the front of the toaster to allow easy access the control panel and the toast feed ramp.

Set up:

The installation of the unit must be performed by a qualified technician only.

Place the device on top of a solid, even, safe and stable surface that tolerates the weight of the unit.

Ensure no flammable products are placed near the unit, as it will get hot.

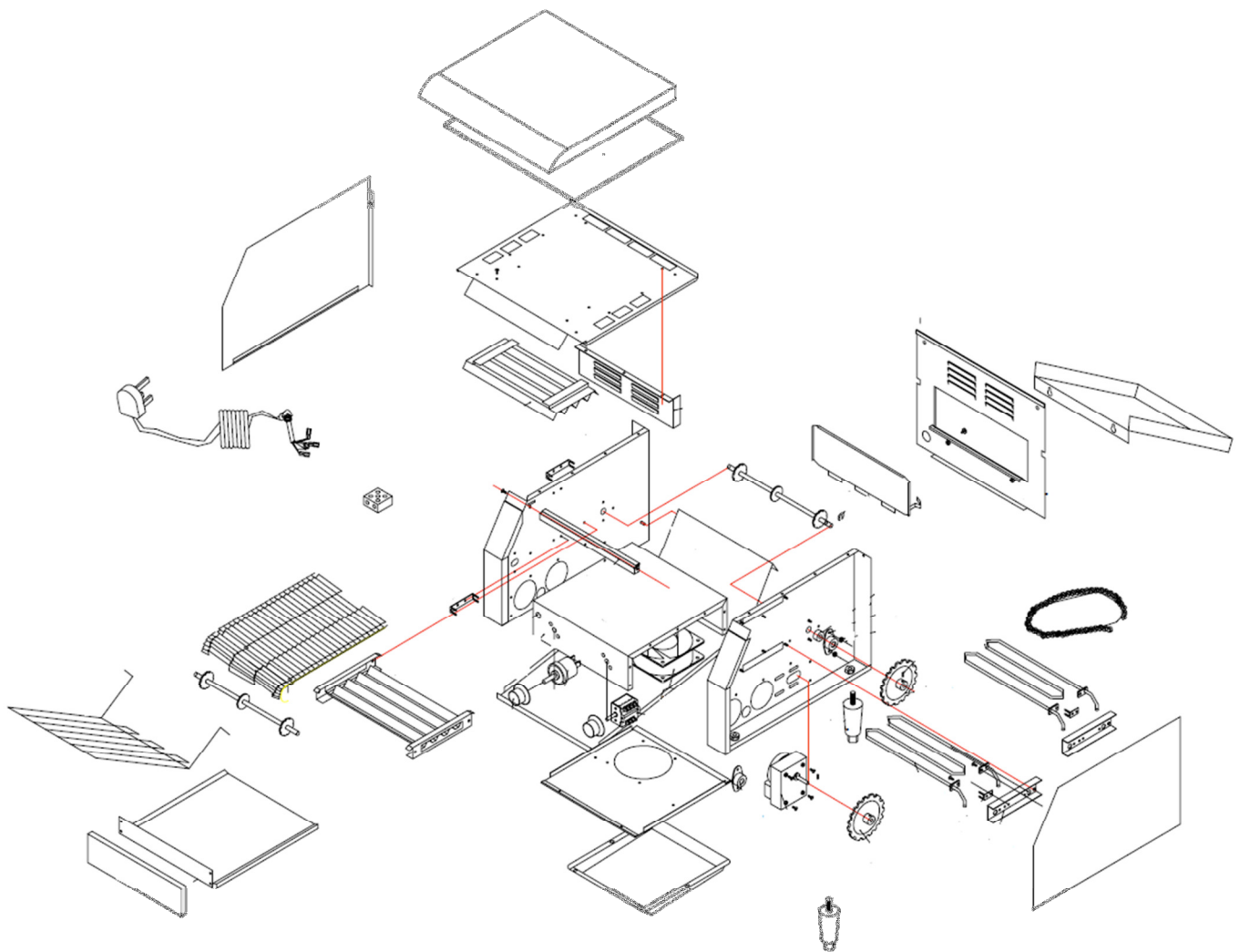
Position the device appropriately so that the plug is always accessible. Also ensure the unit isn't placed close to any water.

Operating Instructions

1. Firstly ensure the conveyor toaster is placed on a horizontal surface.
2. Select desired position of the toast feed ramp, there are two angle options:
 - When in the upright position, the toaster is set for automatic feed. Simply place the bread onto the toast feed ramp, and it will be automatically carried through the toaster.
 - For manual feeding, tip the toast feed ramp until it rests on top of the unit. In this position bread products can be manually loaded by placing them directly on to the conveyor belt.
3. Turn the power switch on.
4. Select conveyor belt speed using the left dial.

5. Using the right-hand dial, select the desired toasting setting.
6. Then simply place the bread on the ramp/directly on the belt (depending which feed ramp position you have selected)
7. The bread will be fed through the toaster and will come out on the ramp below.
8. When you have finished with the toaster, ensure it is switched off on the unit itself as well as at the mains.

Parts Diagram



Parts No.	Part Name	Quantity
TT-300-01	Fat tray runners front panel	1
TT-300-02	Fat tray runners	1
TT-300-03	Meshwork	1
TT-300-04	Transmission shaft	1
TT-300-05	Wire-mesh belt	1
TT-300-06	Down heater cover board	1
	Down heater cover fixation	2
TT-300-07	Heater support (left)	2
TT-300-08	Inner side panel (left)	1
TT-300-09	Front cross beam	1
TT-300-10	Inner Box bottom board	1
TT-300-11	Indicator Light	1
TT-300-12	Front Panel	1
TT-300-13	Side Stat	1
TT-300-14	Knob	2
TT-300-15		1
TT-300-16	Switch	1
TT-300-17	Base board clapboard	1
TT-300-18	Base board	1
TT-300-19	Front axle jacket fixation	2
TT-300-20	Motor	1
TT-300-21	Motor chain wheel	1
TT-300-22	Side Panels (right)	1
TT-300-23	Element retainer	2
TT-300-24	Element support (right)	2
TT-300-25	Down element	1
TT-300-26	Adjustable foot	4
TT-300-27	Chain wheel	1
TT-300-28	Detent pin	2
TT-300-29	Nut	10
TT-300-30	Back axle jacket fixation	2
TT-300-31	Axle jacket	4
TT-300-32	Inner side panel (right)	1
TT-300-33	Link chain	1
TT-300-34	Screw	2

TT-300-35	Back plate	1
TT-300-36	Backboard	1
TT-300-37	Back slideway board	1
TT-300-38	Plate spring	2
TT-300-39	Down slideway board	1
TT-300-40	Boarding	1
TT-300-41	Plate screws	1
TT-300-42	Electric heater	1
TT-300-43	Junction box	1
TT-300-44	Power cord	1
TT-300-45	Side panels (left)	1
TT-300-46	Top splash guard	1
TT-300-47	Screw	61
TT-300-48	Coping board clapboard	1
TT-300-49	Top cover board	1
TT-300-50	Screw	4
TT-300-51	Top	1